

# HOMES & GARDENS®

APRIL 2015  
£4.10

## BESPOKE DESIGN

TAILOR-MADE HOMES  
FULL OF CHARACTER

**NEW COLLECTIONS**  
THIS SEASON'S  
FABRICS AND COLOURS

**SPRING AWAKENING**  
EASTER DECORATING  
COOKING WITH EGGS  
GARDENS IN BLOOM

**STUDY SPACES**  
CREATIVE IDEAS AND  
INSPIRING SOLUTIONS

**CHIC SHOPPING**  
MARBLE COFFEE TABLES  
ELEGANT BAR STOOLS  
STYLISH CERAMICS



RECALL: 1/4/15

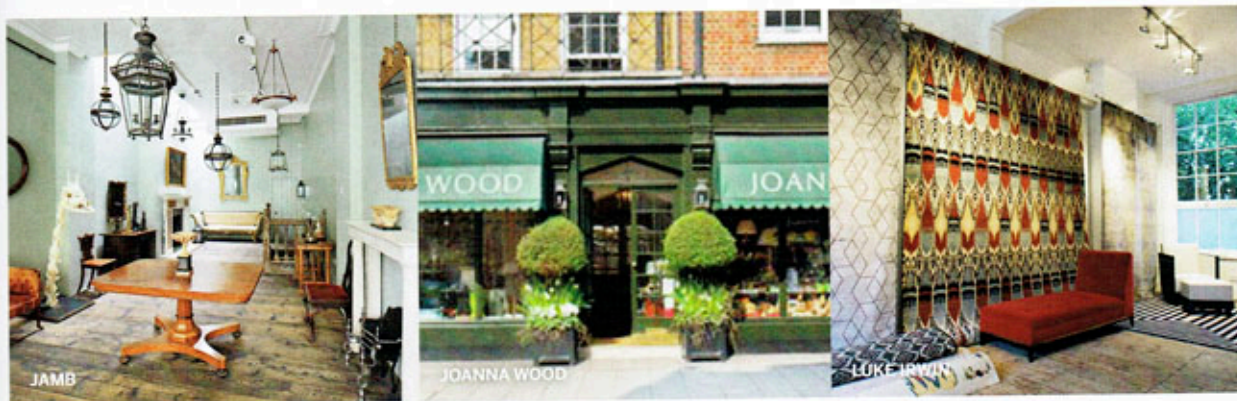


0 4 >

# LONDON *directory*

## PIMLICO ROAD

Just a few minutes' walk from Sloane Square, this upmarket design district has a lively antiques and art scene, with equally impressive dining offerings



### WHERE TO SHOP

#### DE LE CUONA

44 Pimlico Road, SW1W 8LP.  
020 7730 0944, [delecuona.co.uk](http://delecuona.co.uk).  
H&G favourite and founder of the world's largest own-brand linen collection, Bernie de Le Cuona has furnished her second London showroom with typical panache. At the front of the store, cushions and throws in tactile linens and decadent patterns lure passers-by, while a fabric studio at the rear shows off the stonewashed linens and wool and cotton paisleys for which the textile designer is celebrated. The new Crocodile and Cashmere collections of luggage, bags and throws would make ideal gifts. Closed Sundays.

#### HOWE LONDON

93 Pimlico Road, SW1W 8PH.  
020 7730 7987, [howelondon.com](http://howelondon.com).  
It can be tricky discerning old from new in Christopher Howe's store. More exhibition space than shop, the two-storey premises, manned by an expert staff of ten, showcase the antiques dealer's collection of 18th-, 19th- and 20th-century

furniture and lighting alongside meticulously crafted reproductions. When Christopher finds a piece he loves, he tasks a team of 60 designer-makers with replicating it using traditional methods. For stylish leathers and fabrics by Howe, visit the Bourne Street shop, around the corner. Closed Sundays.

#### JAMB

95/97 Pimlico Road, SW1W 8PH.  
020 7730 2122, [jamb.co.uk](http://jamb.co.uk).  
Head here for antique and reproduction pieces, from lighting and furniture to chimneypieces, fire grates and garden ornaments, from the 17th, 18th and 19th centuries. Jamb is also the UK representative for Jasper Fabrics by American designer Michael S Smith and has a dedicated room showcasing his classic country-house designs in understated colourways. Closed Sundays.

#### JOANNA WOOD

48A Pimlico Road, SW1W 8LP.  
020 7730 5064, [joannawood.co.uk](http://joannawood.co.uk).  
Interior design authority and co-founder of fabric and wallpaper

company Lewis & Wood, Joanna Wood was just 25 when she set up her own business. Her Pimlico Road store is the place to go for unique and charming homewares. You'll find a beautifully curated selection, sourced from all over the world, including whimsical cushions, contemporary vases and silverware, and luxurious throws. Closed Sundays.

#### LINLEY

60 Pimlico Road, SW1W 8LP.  
020 7730 7300, [davidlinley.com](http://davidlinley.com).  
Chairman of Christies UK, nephew of the Queen and all round purveyor of good taste, David Linley is best known for his exquisitely crafted bespoke furniture. At his capacious flagship store, you'll also find an interior design service, plus decadent items for the home, from crystal Champagne flutes to photograph frames in American walnut.

#### LUKE IRWIN

20/22 Pimlico Road, SW1W 8LJ.  
020 7730 6070, [lukeirwin.com](http://lukeirwin.com).  
Situated across two rooms, draped

floor-to-ceiling in sumptuous rugs, Luke Irwin's flagship store features a selection of the Irish designer's favourite creations, including his popular red Geometric Silk rug. Irwin's signature Ikats, as well as rugs from his Fresco & Nimbus, Bamboo Silk, Ozymandias and Tarantella collections, add to the showroom's indulgent feel. Each of the bespoke designs is individually handmade to order and hand-knotted in either India or Nepal, with luxurious materials ranging from cashmere to silk. Closed Sundays.

#### MARSTON & LANGINGER

194 Ebury Street, SW1W 8UP.  
020 7881 5700,  
[marston-and-langinger.com](http://marston-and-langinger.com).  
The only showroom of this company, which specialises in creating grand conservatories and orangeries, features a stunning display that highlights its fine craftsmanship. You'll also find examples from its blinds collection and furniture ranges, which change quarterly. Sit down with one of the knowledgeable staff to